

Dismantling Joints

DN40 to DN2400



INSTALLATION INSTRUCTIONS

– GB

Helden[®]

PIPE CONNECTIONS • REPAIR • FLOW CONTROL PRODUCTS

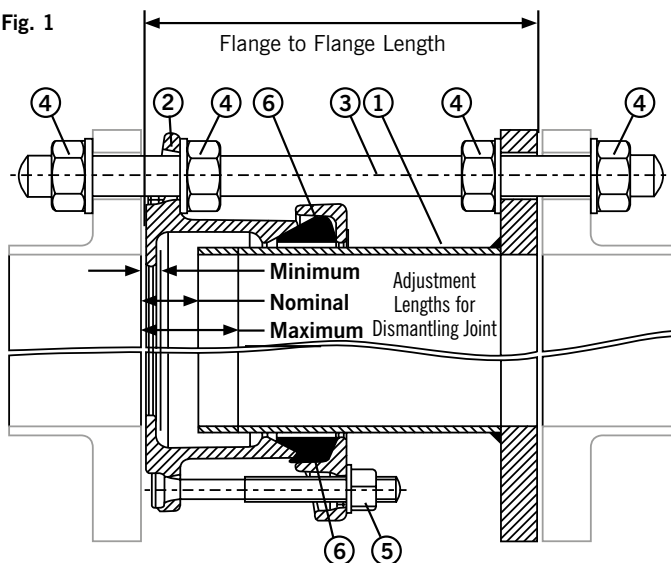
CRANE

BUILDING SERVICES & UTILITIES



Dismantling Joints up to DN300

Fig. 1



Components

- 1) Flange Spigot
- 2) Flange Adaptor
- 3) Tie Rods
- 4) Tie Rod Nut & Washer
- 5) Flange Adaptor Nut & Washer
- 6) Gasket

Maximum Adjustment Length for sizes up to DN300 = 40mm

Stud Torque for M12 Bolts = 55 – 65 Nm

Holden Dismantling Joints include a flange adaptor, a flanged spigot pipe and tie rods.

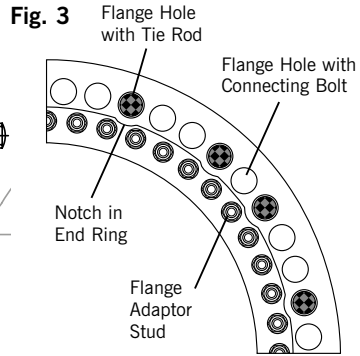
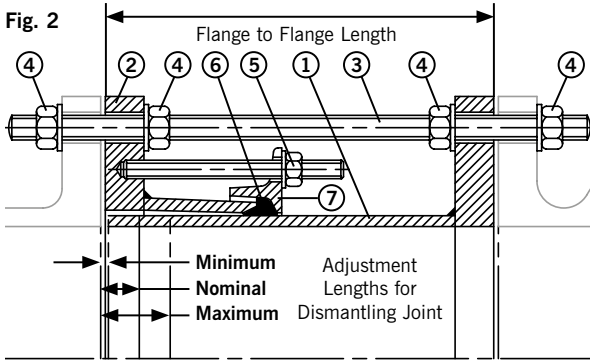
Each Dismantling Joint has a specified flange-to-flange dimension, which positions the Dismantling Joint at its mid point. The plus and minus dimension specified on the label are the maximum and minimum amounts of movement available to take up any site tolerances, i.e. they provide the maximum and minimum flange-to-flange dimensions respectively.

Check grade of gasket supplied with the product is suitable for conveyed medium.

Dismantling Joints up to DN300

- 1) Position the spigot inside the flange adaptor until the front edge of the spigot is flush with the face of the flange adaptor (minimum flange to flange distance).
- 2) Position the Dismantling Joint between the two flanges to which it is to be connected. Withdraw the spigot until all the free play is taken up, **ensuring the maximum flange-to-flange dimension is not exceeded.**
- 3) Position flange connecting gaskets (not supplied, but recommend the use of IBC gaskets) between both flange sets, and loosely assemble flange connecting bolts.
- 4) Remove all nuts and washers from the tie rods (supplied) and insert them from one side in their appropriate positions. The nuts and washers have to be threaded back onto the tie rod in sequence as they are installed.
- 5) Tighten the flange connecting bolts (not supplied) and tie rods in accordance with standard procedures.
- 6) Tighten diametrically opposed flange adaptor studs giving the nuts one or two turns at a time to draw up the end ring evenly. The studs must be thoroughly tightened to the figures given above with the drawing, **working around the flange adaptor as many times as necessary.** Rubber may be seen to extrude into the gap between the end ring and spigot pipe.

Dismantling Joints over DN300



- Components**
- | | |
|-------------------------|--------------------------------|
| 1. Flange Spigot | 5. Flange Adaptor Nut & Washer |
| 2. Flange Adaptor Body | 6. Gasket |
| 3. Tie Rods | 7. Endring |
| 4. Tie Rod Nut & Washer | |

Maximum Adjustment Length for sizes over DN300

(See product label for details)

**Stud Torque for M12 Bolts = 55 – 65 Nm,
M16 Bolts = 95 – 120 Nm**

SLEEVE LENGTH	MAXIMUM ADJUSTMENT
73mm	50mm
87mm	60mm
125mm	125mm

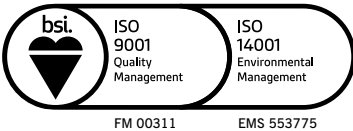
Holden Dismantling Joints include a flange adaptor, a flanged spigot pipe and tie rods.

Each Dismantling Joint has a specified flange-to-flange dimension, which positions the Dismantling Joint at its mid point. The plus and minus dimension specified on the label are the maximum and minimum amounts of movement available to take up any site tolerances, i.e. they provide the maximum and minimum flange-to-flange dimensions respectively. Check grade of gasket supplied with the product is suitable for conveyed medium.

Dismantling Joints over DN300

- A) Place the end ring over the spigot pipe end, ensuring that the gasket chamber faces the plain end and the vertical end faces the flange.
Lubricate the gasket thoroughly with a thin film of any non-oil based water quality approved pipe joint lubricant and stretch it onto the spigot pipe end, ensuring that the thicker or vertical end is towards the end ring.
- B) Position the spigot inside the flange adaptor until the front edge of the spigot is flush with the face of the flange adaptor (minimum flange to flange distance).
- C) Position the Dismantling Joint between the two flanges to which it is to be connected. Withdraw the spigot until all the free play is taken up, **ensuring the maximum flange-to-flange dimension is not exceeded.**
- D) Position flange connecting gaskets (not supplied, but recommend the use of IBC gaskets) between both flange sets, and loosely assemble flange connecting bolts.
- E) Remove all nuts and washers from the tie rods (supplied) and insert them from one side in their appropriate positions - **the end ring has been marked with notches to identify the correct positions for the tie rods to ensure maximum load capability (see Fig 3).** The nuts and washers have to be threaded back onto the tie rod in sequence as they are installed. For tie rods sized larger than M48 (2"), double nuts must be used (supplied) at each end.
- F) Tighten the flange connecting bolts (not supplied) and tie rods in accordance with standard procedures. Torque the tie rods to the same level as flange connecting bolts.
- G) Slide the gasket forward into the gasket chamber of the flange adaptor (the end ring may assist in this operation).
- H) Bring the end ring into position, locate the studs and fit the washers and nuts finger tight.
- I) Tighten diametrically opposed flange adaptor studs giving the nuts one or two turns at a time to draw up the end ring evenly. The studs must be thoroughly tightened to the figures given above with the drawing, **working around the flange adaptor as many times as necessary.** Rubber may be seen to extrude into the gap between the end ring and spigot pipe.

On some large diameter products (typically above DN1400) there will be some small, matching identification marks on the outer edges of the End Ring and Flange Adaptor Body, these are to be aligned to enable ease of final assembly during installation.



To visit our Video Library go to:
<http://www.youtube.com/user/CraneBSU>



46-48 WILBURY WAY
HITCHIN,
HERTFORDSHIRE
SG4 0UD. UK

TELEPHONE: +44 (0)1462 443322
FAX: +44 (0)1462 443311
EMAIL: info@helden-web.com
www.helden-web.com

Every effort has been made to ensure that the information contained in this publication is accurate at the time of publishing. Crane Ltd assumes no responsibility or liability for typographical errors or omissions or for any misinterpretation of the information within the publication and reserves the right to change without notice.

DR10970_04_01_2022_REV08